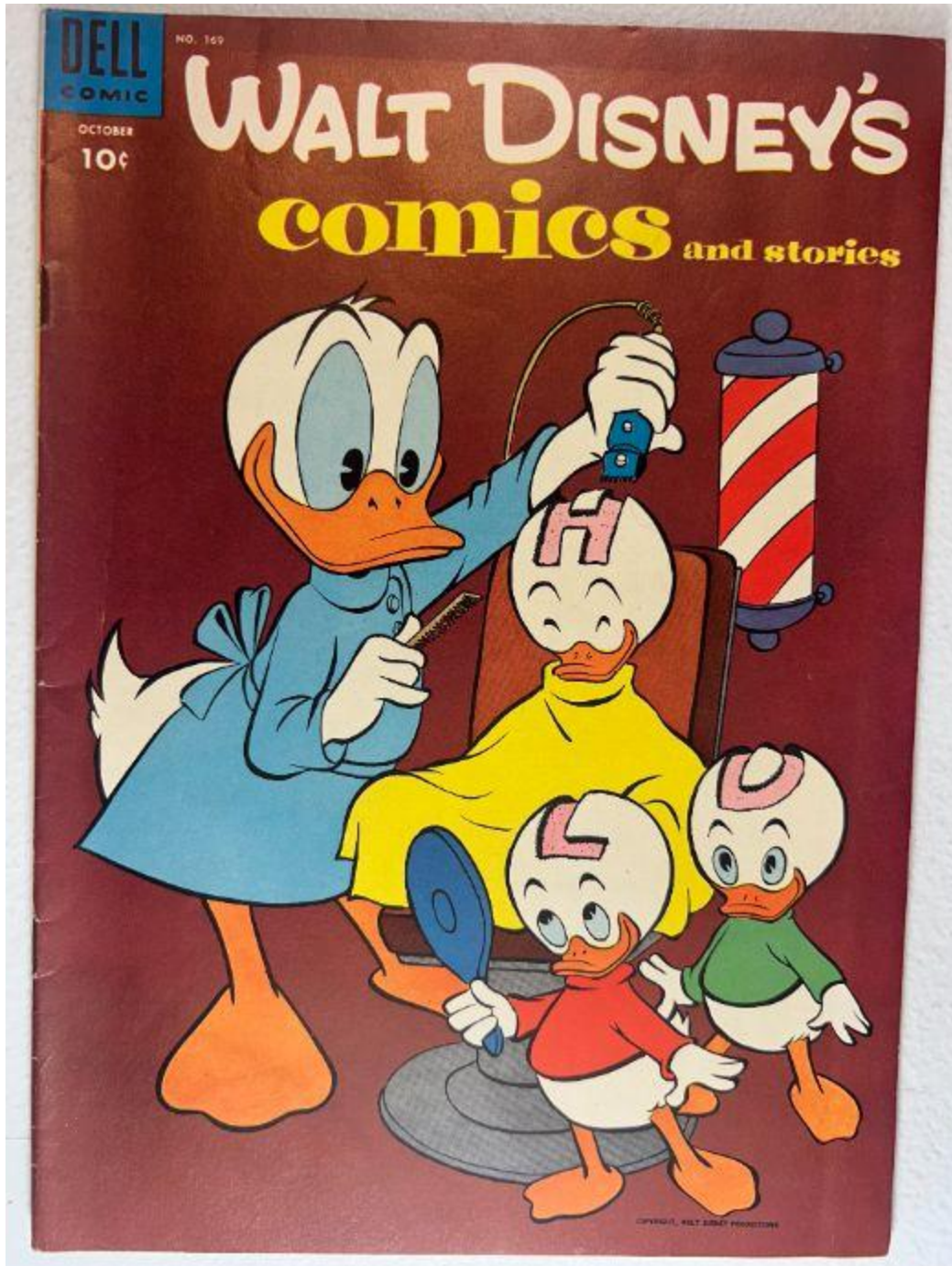


■ **Walt Disney's Comics and Stories – Vol. 15 No. 1  
(October 1952)**

Evaluation Date: April 3, 2026



# SUMMARY OF OBSERVATIONS

This comic retains the front cover, back cover, centerfold, and all photographed interior pages. Overall visual presentation is strong. The front cover exhibits vivid color saturation and retained surface gloss, with clean artwork and intact edges. Interior pages display clear printing with consistent age-related toning. The spine remains continuous and aligned, showing light cracking and oxidation at the staple locations.

Condition issues are present but localized. Both staples are present and embedded, showing visible surface oxidation with localized discoloration of surrounding paper. The spine exhibits fine vertical cracking without long splits or separation. Some interior pages show mild darkening along the fore-edge, most noticeable toward the front of the book. Writing is visible on the back cover. The brittleness test image shows a single page gently flexed, forming a smooth arc with no visible fiber fracture on the lifted page.

This issue is the **first issue of Volume 15**, marking the beginning of a new publishing year for *Walt Disney's Comics and Stories*. First issues of a volume are commonly noted by collectors and are frequently used as anchor points when assembling complete volume sets. As the opening issue of the volume, this comic carries recognized **collector and market special interest independent of condition**.

## FRONT COVER — OBSERVATIONS

*Walt Disney's Comics and Stories – Vol. 15 No. 1 (October 1952)*

### Photo Condition & Quality:

Image is sharp and evenly lit, with edges, corners, and spine clearly visible. Resolution is sufficient to assess surface gloss, edge continuity, and spine condition.

### Observations:

- Strong, even color saturation across the cover field.
- Surface gloss is clearly visible.
- Along the spine edge, fine vertical cracks are present, approximately **2–4 mm** in length.
- No long spine splits or exposed interior layers observed.
- Lower edge of the front cover remains intact.
- Corner rounding present on all corners, approximately **3–5 mm** inward.
- No writing observed on the front cover.

### Overall Impression:

The front cover presents strongly, with **light spine cracking and minor handling wear**.

## BACK COVER — OBSERVATIONS

Walt Disney's Comics and Stories – Vol. 15 No. 1 (October 1952)

### Photo Condition & Quality:

Image is clear and evenly lit, fully framed with edges and corners visible.

DELICIOUS FOR FOLKS OF ACTION!

*A91*

**Baby Ruth**  
CANDY...enriched with dextrose (a food energy source)

PARDNERS...WE ALL LOVE BABY RUTH AROUND HERE

YIPPEE YUM! DELICIOUS BABY RUTH SURE GIVES ME LOTS OF PEP

I SEE IT GIVES YOU BOUNCE, TOO

I SURE GO FOR THESE TASTY NUTS IN BABY RUTH

I'M PITCHING FOR A BIG BABY RUTH

# CURTISS

**CURTISS CANDY COMPANY** Otto Schnering, Founder  
makes of Butterfinger, Coconut Grove, Caramel Nougat, Dip candy bars, Sof-T-Pops, Fruit Drops and Mints

### Observations:

- Uniform age toning across the back cover.
- **Writing is visible**, confined to a small area and not overlapping printed artwork.
- Paper surface appears flat with no cockling or rippling.
- Light edge wear along the bottom and spine edges, approximately **5–10 mm intermittently**.
- No paper loss observed.

### Overall Impression:

The back cover remains intact with **light handling wear and localized writing**.

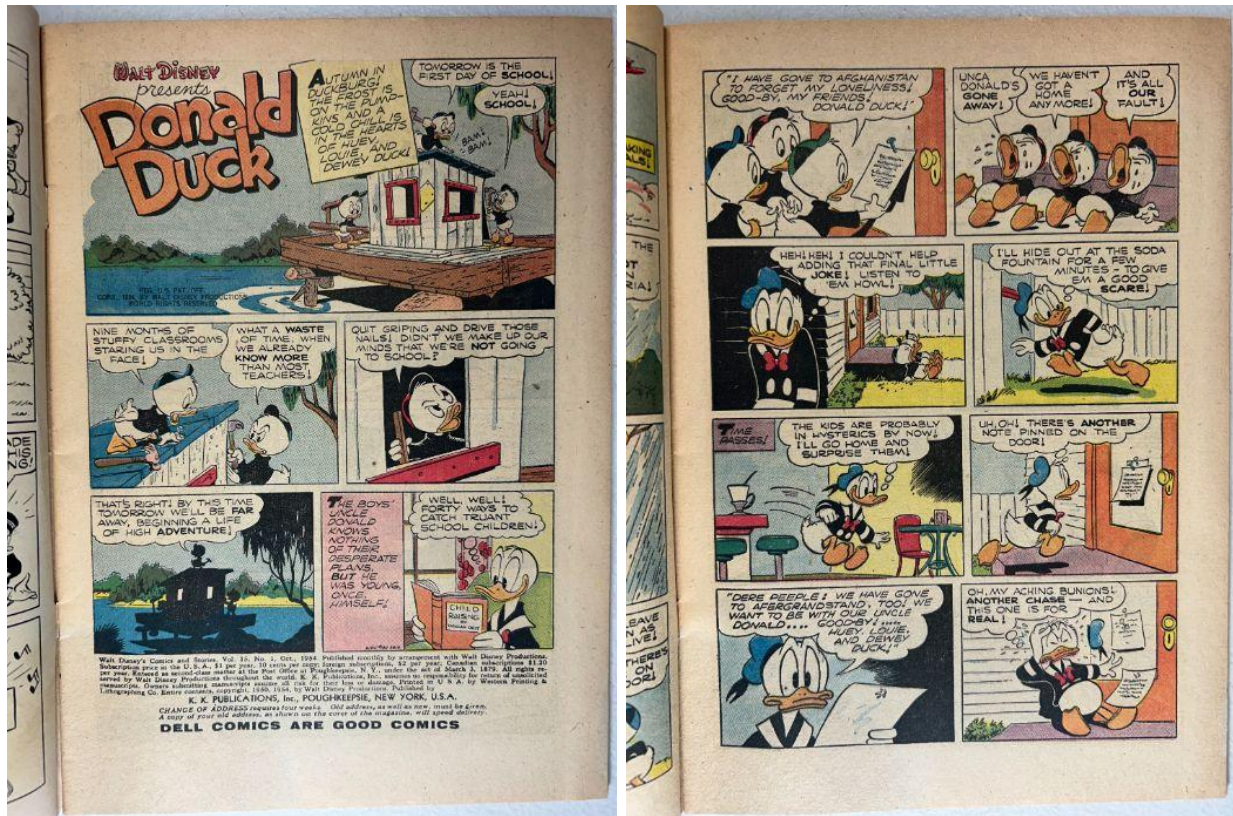
## INTERIOR PAGES — OBSERVATIONS

*Walt Disney's Comics and Stories – Vol. 15 No. 1 (October 1952)*

### Photo Condition & Quality:

Images are sharp and evenly lit, showing full interior pages with margins visible.





### Observations:

- Interior pages exhibit **tan to light-tan paper coloration**.
- Mild **fore-edge darkening** visible on some pages near the front, approximately **5–10 mm inward**.
- Artwork remains clear with strong color and crisp linework.
- No interior tears or paper loss observed.
- Minor corner bends visible on some pages, approximately **3–5 mm inward**.
- No interior writing observed.

### Overall Impression:

Interior pages are **clean and readable**, with **localized fore-edge darkening** only.

# CENTERFOLD — OBSERVATIONS

Walt Disney's Comics and Stories – Vol. 15 No. 1 (October 1952)

## Photo Condition & Quality:

Image is in focus and evenly lit, showing both pages and the central gutter clearly.



**Observations:**

- Both staple positions visible.
- Surrounding paper shows light stress at staple locations.
- Centerfold remains fully attached.
- Fold line shows light compression only.

**Overall Impression:**

The centerfold remains **securely attached with minor staple-area stress**.

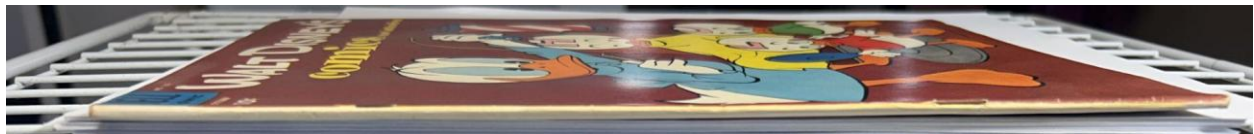
---

## SPINE — OBSERVATIONS

*Walt Disney's Comics and Stories – Vol. 15 No. 1 (October 1952)*

**Photo Condition & Quality:**

Image is sharp and well lit, showing the full spine length clearly.

**Observations:**

- Spine is continuous and aligned.
- Fine vertical cracks present, approximately **2–4 mm** in length.
- No long splits or exposed interior page layers observed.

**Overall Impression:**

The spine is **structurally intact with light cracking**.

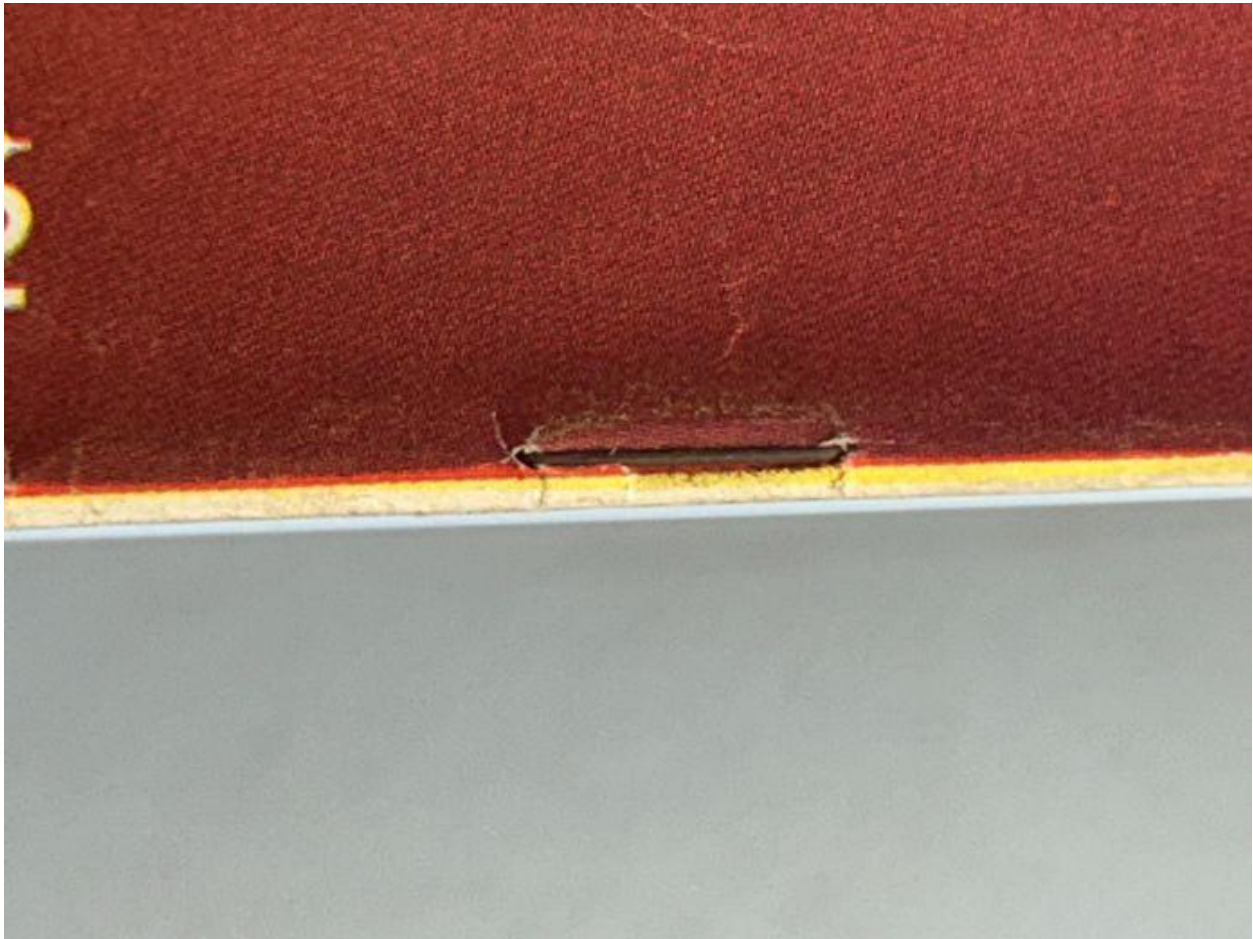
---

# UPPER STAPLE — OBSERVATIONS

*Walt Disney's Comics and Stories – Vol. 15 No. 1 (October 1952)*

## **Photo Condition & Quality:**

Macro image is sharp and evenly lit.



## **Observations:**

- Metal staple present and embedded.
- Visible surface oxidation with localized paper discoloration extending **~2–4 mm**.

## **Overall Impression:**

Upper staple shows **oxidation with minor surrounding paper impact**.

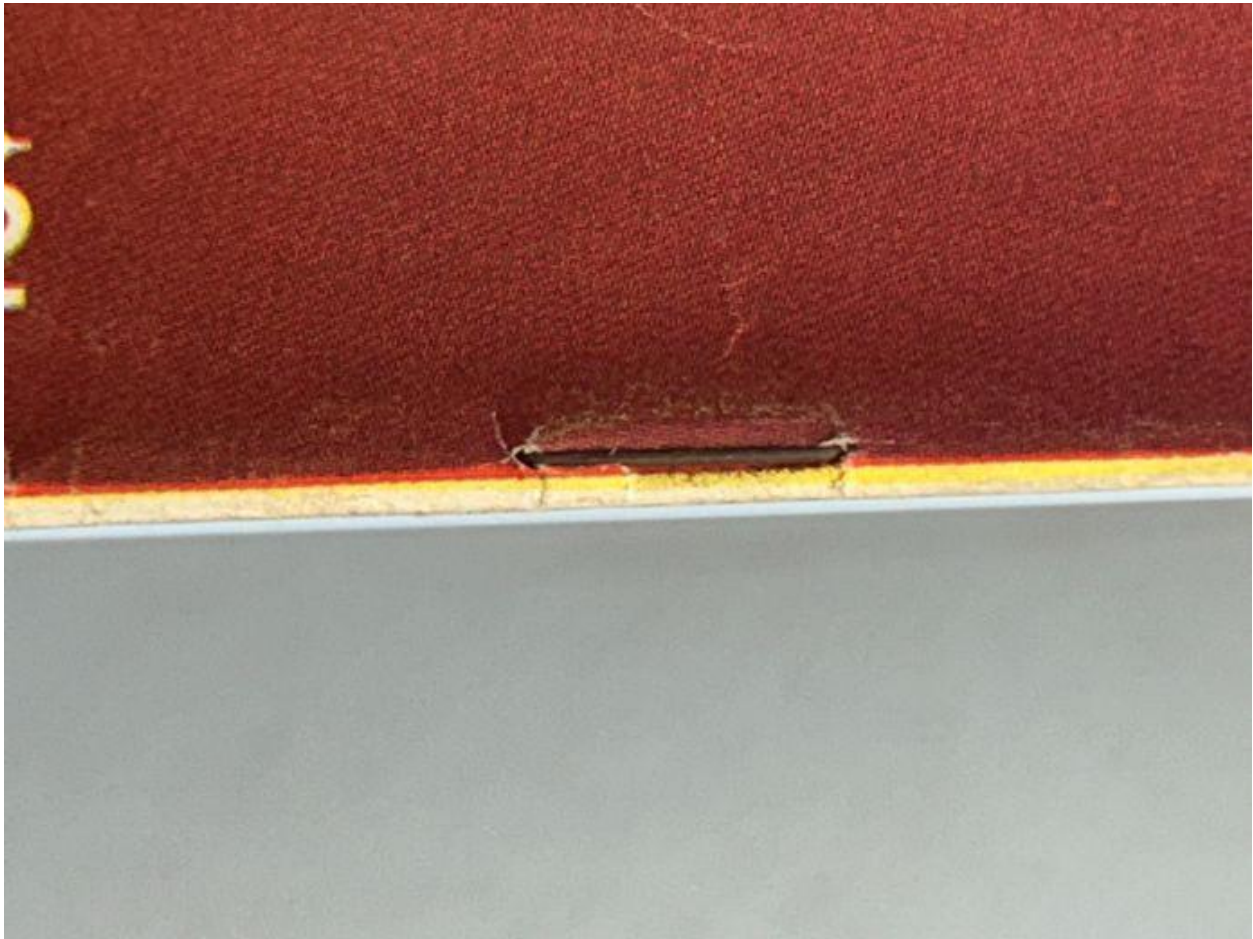
---

# LOWER STAPLE — OBSERVATIONS

*Walt Disney's Comics and Stories – Vol. 15 No. 1 (October 1952)*

## **Photo Condition & Quality:**

Macro image is clear and properly framed.



## **Observations:**

- Metal staple present and embedded.
- Oxidation comparable to the upper staple.
- Surrounding paper shows similar localized discoloration.

## **Overall Impression:**

Lower staple shows **oxidation with minor surrounding paper impact.**

---

# BRITTLENESS TEST — OBSERVATIONS

*Walt Disney's Comics and Stories – Vol. 15 No. 1 (October 1952)*

## **Photo Condition & Quality:**

Image shows a single interior page lifted above flat underlying pages.



## **Observations (confined to the lifted page):**

- Page bends in a smooth, shallow arc.
- No visible fiber fracture, splitting, or flaking along the bend line.
- Paper surface remains continuous at the point of flex.

## **Overall Impression:**

The tested page demonstrates **retained flexibility** and does **not exhibit brittle behavior**.